

Registration

Cost: \$300 for full day (\$150 for single day) for physicians; \$150 (\$75 per day) for nurses, physician assistants, nurse practitioners, nurses, and trainees. Virtual and in-person options available.

Location: RLA Learning and Conference Center
850 Cranberry Woods Dr
Cranberry Twp, PA 16066

Register Online: <https://www.tristateoma.org>

ACGME Accreditation Statement

This activity has been planned and implemented in accordance with the accreditation requirements and policies of the Accreditation Council for Continuing Medical Education (ACCME) through the joint providership of the American College of Occupational and Environmental Medicine (ACOEM) and the Tri State Occupational Medicine Association (Tri-State OMA) ACOEM is accredited by the ACCME to provide continuing medical education to physicians.

AMA Credit Designation Statement

The American College of Occupational and Environmental Medicine designates this live activity for a maximum of *14.25 AMA PRA Category 1 CreditsTM*. Physicians should claim only the credit commensurate with the extent of their participation in the activity.

ANCC Credit Designation Statement

We have applied for 14.3 hours of continuing nursing education credits through the Ohio Nurses Association. The Ohio Nurses Association is accredited as an approver of nursing continuing professional development by the American Nurses Credentialing Center's Commission on Accreditation. (OBN-001-91).

P.O. Box 21309
South Euclid, OH 44121

2022 Annual TSOMA Conference



2022 Annual Tri-State OMA Conference

October 21 and 22
RLA Learning and Conference
Center: Pittsburgh, PA



Thank you to our sponsors:



Agenda

Friday, October 21

8:30-11:30: Onsite Learning

Laboratory– see website to choose location

11:30-1:00: Lunch and Conference

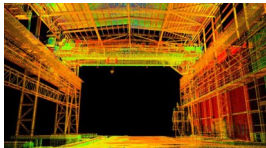
Sign In

1:00-2:00: Can Pharmacogenetics Enhance Our Understanding and Management of Opioid Use Disorder, Jon Sprague, PhD

2:00-3:00: Understanding Evidence-Based Social Support Strategies for Protecting Psychological Health at Work: An Occupational Health Psychology Perspective, Christopher Cunningham, PhD

3:00-3:15: Break

3:15-4:15: Perspectives in Occupational Medicine: Past and Present, Daniel A. Nackley, M.D., M.Sc.



4:15-5:15: PFAs - Current State of Affairs, Manijeh Berenji, MD, MPH, Warren Silverman, MD

6:30: Dinner and Social Event, Details to come

Saturday, October 22

8:00-9:00: Foot and Ankle Injuries and Illnesses Related to the Workplace, Jeffrey Kann, MD

9:00-10:00: Return to Work Strategies and Accommodations for Post Acute Sequela of COVID, Nancy Gowan, BSc (OT), ROT, CDMP

10:00-10:15: Break

10:15-11:15: FMCSA Update 2022, Carl Werntz, DO

11:15-12:15: Assessment of Impairment at the Worksite; Utilizing Law Enforcement Experience with Impaired Driving, Craig Amos, PA

12:15-1:15: Lunch/Business Meeting

1:15-2:15: Sleep Disorders and Driving Safety – What’s New ?, Heidi Riney, MD

2:15-3:15: You Did What While You Were Doing What? Exposures Which May Happen in a Research Setting, Yolanda Lang, RN,MSN, PhD, CRNP

3:15-3:30: Break

3:30-4:30: Musculoskeletal Lifestyle, Rick Dutta, MS, MBA



Onsite Learning Laboratories: (Choose at time of registration)

- **Alcoa-Traco**- manufacturer of windows and doors
- **TranStar Railway**—delivers a comprehensive spectrum of highly-reliable transportation and logistics services

Onsite Learning Laboratories have limited space and are first come, first served and subject to local COVID-19 restrictions